



Effective July 1, 2021, through June 30, 2022

Overview

KUSD will continue to implement layered mitigation strategies, which will include:

- Practicing physical distancing of 3 feet or more to the greatest extent possible
- Encouraging regular hand-washing for 20 seconds or more
- Providing hand sanitizer and encouraging individuals to use it when entering/exiting classrooms and
- Covering coughs and sneezes
- Cleaning and disinfecting frequently touched surfaces
- 5I[S[_QTT JM ZMY]QZML NWZ ITT [\]LMV\[[\]z IVL ^Q[Q\WZ[transportation until Sunday, March 27.

On March 28 masks will become highly recommended but optional except when riding district

\ZIV[XWZ\I\QWV WZ XIZ\QKQXI\QVO I[I [\]z WZ [\]LMV\ QV \

- Masks should:

OE +W^MZ \PM VW[M IVL UW]\P IVL Å\ [V]OTa IOIQV[\ \PM

- Should be a solid piece of material without slits, or punctures; mesh masks will not be allowed

OE\]LMV\ I\PTM\M[IVL ÅVM IZ\[XMZNWZUMZ[Q M KPWQZ

whether or not they wear a mask while competing, physically active or performing only.

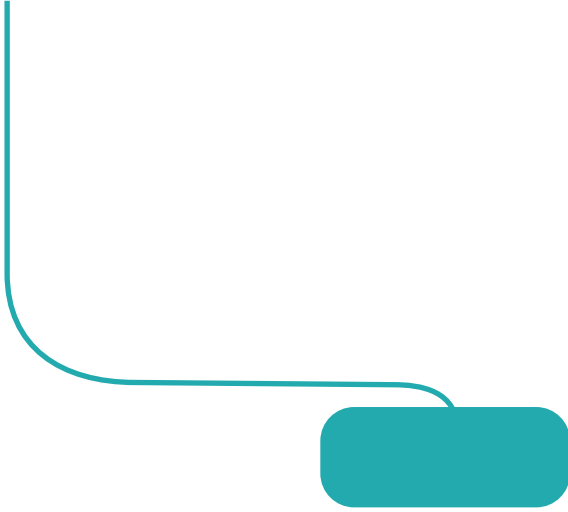
;\]LMV\[IVL [\]z VW\ KWUXM\QVO XPa[QKITTa IK\Q^M W

spectators, must wear masks.

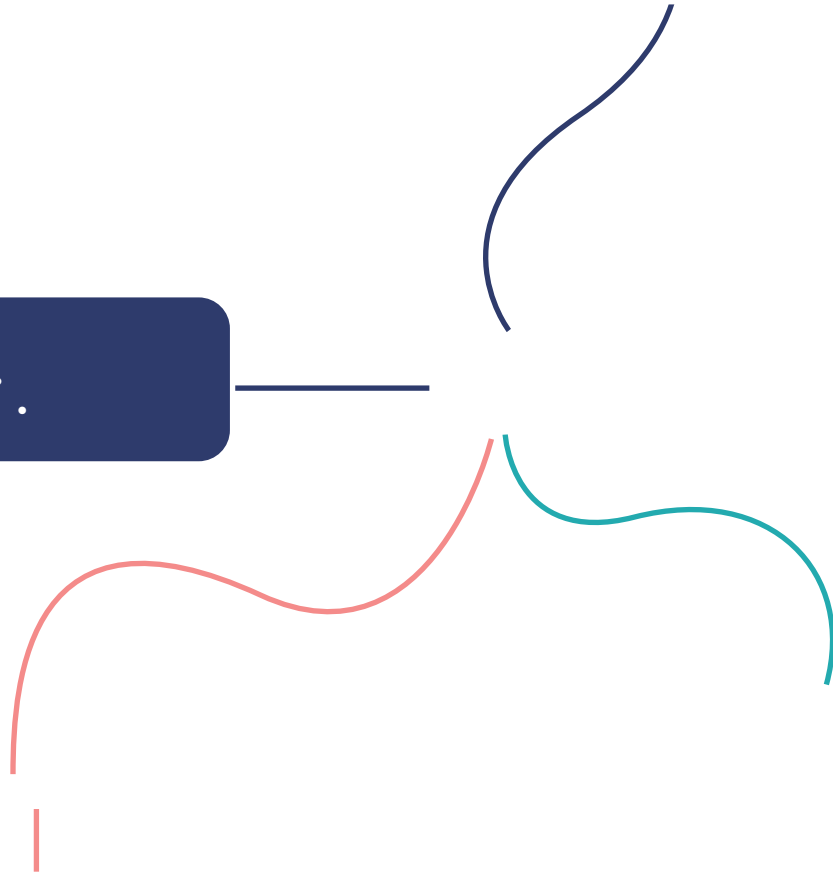
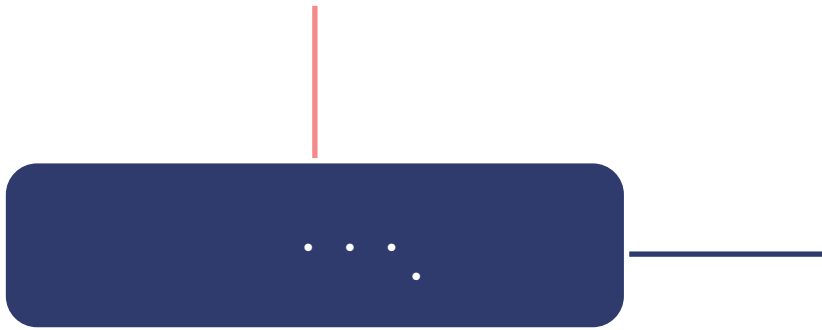
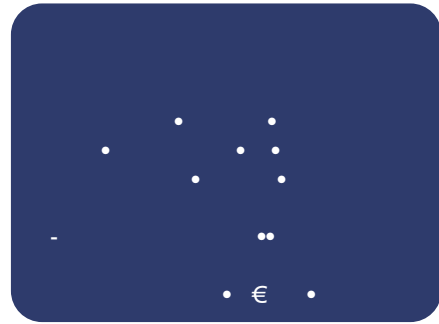
OE 7zMZQVO ^QZ\]IT TMIZVQVO WX\QWV[

- Learn more at kusd.edu/virtuallearning

OE 7zMZQVO " LM^QKM[IVL PW\[XW\[\W []XXWZ\ ^QZ\]IT TMI



STAFF





A stylized logo consisting of a blue 'C' shape. A yellow vertical bar is positioned at the top of the 'C', and a yellow right-pointing triangle is at the bottom. The logo is positioned to the left of the text.

RETURN 2020